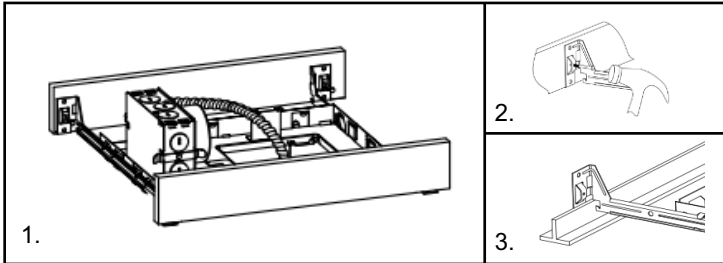


# 5" LED SQUARE RECESSED FIXTURE (120-277V)

## HOUSING INSTALLATION

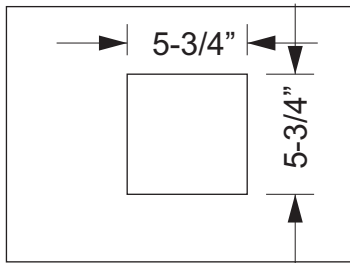
### 1. FASTENING FIXTURE TO CEILING

- Joist-type ceiling-extend bar hangers to fit between joists. Position fixture temporarily by hammering "Nail" into joists. (Drawing2) then secure permanently with nails Hanger should be level with bottom of joists.
- Suspended (T-bar) ceilings-extend bar hangers 1" past T-bars, then rest fixture on T-bars, Secure fixture to T-bars with wire (Drawing3)



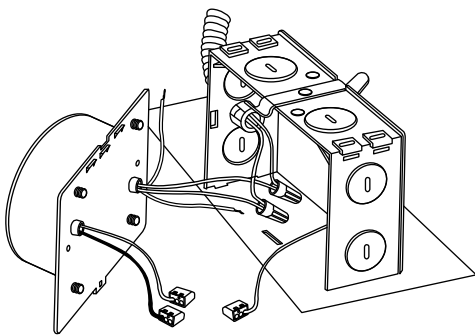
### 2. CUTTING A HOLE

Locate the center of proposed opening on your tile or ceiling material and mark it.



### 3. ELECTRICAL CONNECTION

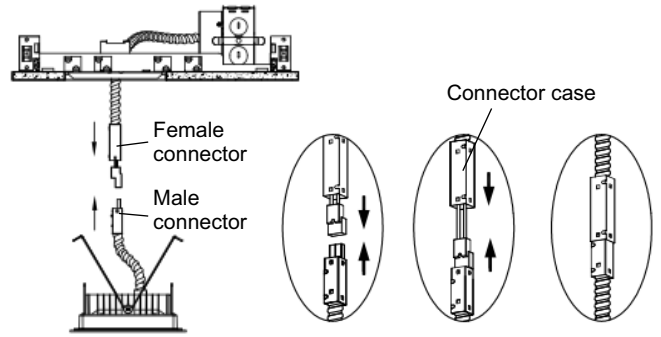
1. Remove spring latched junction box door and connect fixture wires to building wires in the following sequence White fixture wire to white neutral wire black fixture wire to (hot) black wire and green ground wire to bare ground wire
2. Use push-in type wire connectors supplied or white nuts
3. Replace junction box door



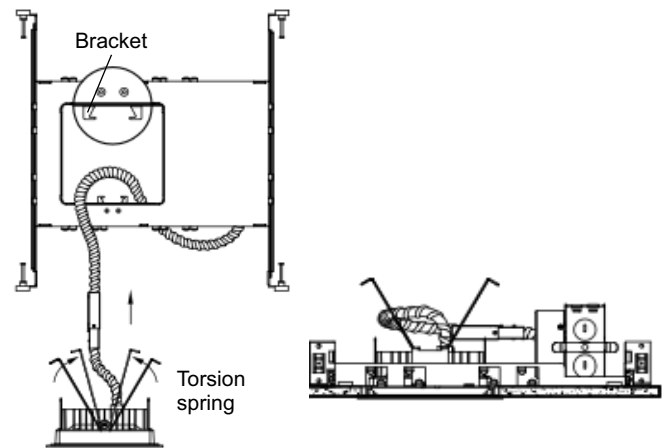
Push-In connector

## TRIM INSTALLATION

1. Connect Female and male connector
2. Connect cases of female and male connector by pushing



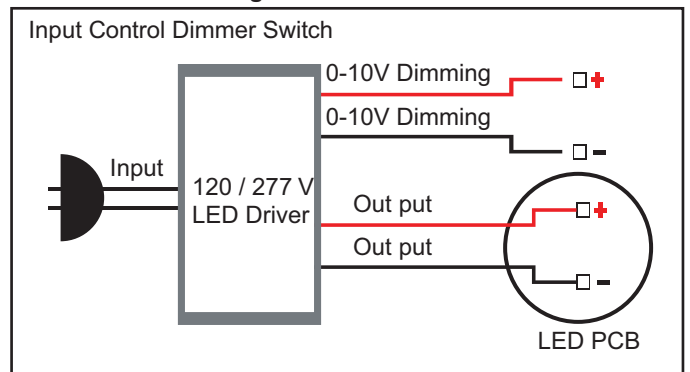
3. Secure square trim into housing by squeezing the ends of torsion springs together, inserting them into the brackets inside the housing, then releasing the springs.



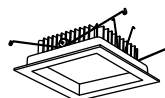
## LIST OF COMPATIBLE DIMMERS:

Mfr	Model #	Dimming Rate
Lutron	NFTV	0 - 100%
Lutron	NTSTV-DV	0 - 100%
Legrand	CD4FBLW	0 - 100%
Leviton	1P710-DL	0 - 100%

## Dimmer Switch Wiring

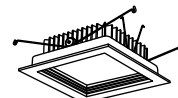


## TRIMS



**E520L2030W**  
(3000K CRI >90)

**E520L2040W**  
(4000K CRI >90)



**E524L2030W**  
(3000K CRI >90)

**E524L2040W**  
(4000K CRI >90)



**E521L2030W**  
(3000K CRI >90)

**E521L2040W**  
(4000K CRI >90)